

# KEYLESSH3

THE SIMPLE HASP

✓ SIMPLE    ✓ SUSTAINABLE    ✓ SECURE

## SIMPLY PERFECT. PERFECTLY SIMPLE.

**SIMPLE** to install and operate, our hasp lock is perfect for assigned or shared use in wet or dry areas.

**SUSTAINABLE** with a solid metal design and no batteries, wires, or harmful waste these locks qualify for two LEEDV4 credits.

**SECURE** with an integrated rotation system, the hasp will not engage cylinder while a padlock is present; preventing forced entry or tampering.



## OUR CLIENTS



amazon



EQUINOX

facebook



Google

HYATT

WELLS FARGO



Mercedes-Benz



PEPSICO



REBEL



VISA

# KEYLESSH3

## ARCHITECTURAL SPECIFICATIONS



PART NUMBER:  
**KEYLESSH3-SN**  
**KEYLESSH3-SN-ADA**

STANDARD FINISH:  
Satin Nickel

FINISHING PROCESS:  
Electroplating



PART NUMBER:  
**KEYLESSH3-MB**  
**KEYLESSH3-MB-ADA**

PREMIUM FINISH:  
Matte Black/Munsell N2

FINISHING PROCESS:  
Electrodeposition coating



PART NUMBER:  
**KEYLESSH3-MW**  
**KEYLESSH3-MW-ADA**

PREMIUM FINISH:  
Matte White/Munsell N9

FINISHING PROCESS:  
Epoxy painting



PART NUMBER:  
**KEYLESSH3-SG**  
**KEYLESSH3-SG-ADA**

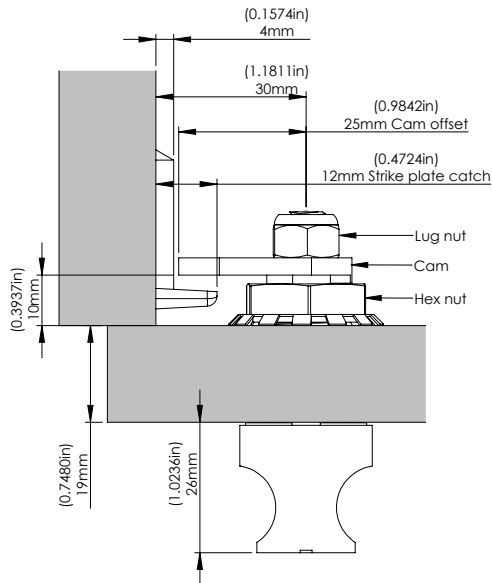
PREMIUM FINISH: Satin  
Gold Pantone #871C

FINISHING PROCESS:  
Epoxy painting

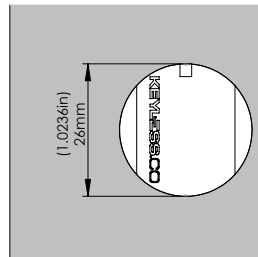
10% color discrepancy, and custom pricing options apply.

- Compatible with wood, glass, plastic, phenolic & metal locker doors
- Anti-pick and tamper resistant
- Lock is designed with an integrated rotation system. With the presence of a padlock the lock will remain locked, continuously spinning to avoid forced entry and tampering
- Ergonomic non-slip grip with a one step twist-and-pull operation
- The hasp accepts padlock shackles between 4mm to 8mm thick
- IP69K - Complete dust and water resistance
- Strong 100% metal for long-term heavy-use - no plastic components
- Accommodates doors 1-19mm thickness
- Standard cam offset 25mm (additional cam offsets available)
- When disinfecting, mist with liquid that is at least 70% alcohol solution in order to maintain product integrity
- **Immediate live response during business hours - no run around** [sos@keyless.co or 972.331.2770]

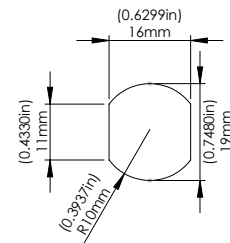
### TOP VIEW



### FRONT VIEW



### DOOR ROUTING



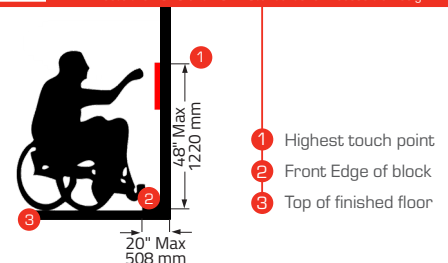
### 2010 & 2012 ADA STANDARDS FOR ACCESSIBLE DESIGN REQUIREMENTS



- 5% of lockers and their operable parts, the locks, must meet ADA specifications.
- Locks shall be operable with one hand.
- Shall not require tight grasping, pinching, or twisting of the wrist to operate.
- Shall have a force required to activate of 5lbs (22.2N) maximum.
- Locks shall be installed maximum 48.00"/1220mm from the floor surface.

### ADA MODEL WITH INTEGRATED LEVER SERVING AS A PULL

Meets the 2010 and 2012 Standards for Accessible Design



# KEYLESSH3

---

## USER INSTRUCTIONS

### TO LOCK

---

- Close the door.
- Turn the knob to the vertical position.
- Insert the padlock and secure.

### TO UNLOCK

---

- Remove the padlock.
- Turn the knob back to the horizontal position.
- Open the door.

#### **CLICK LINK:**

<https://www.keyless.co/keylessH3/instructions/user/>

**SCAN QR CODE  
TO VIEW USER  
INSTRUCTION VIDEO:**

